

Boraginaceae and Polemoniaceae

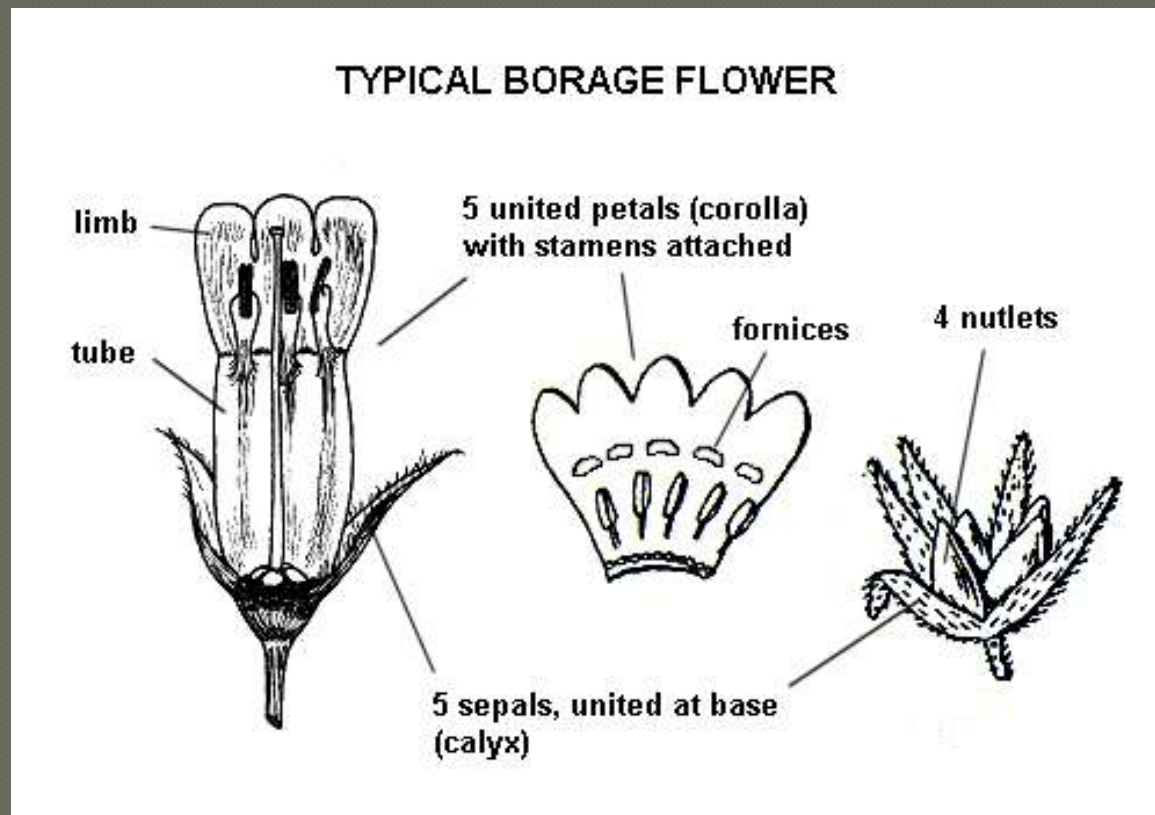
Borage and Phlox Families

Borage Family in El Dorado County

- Boraginaceae (Forget-me-not)
- Mostly herbs, but note Yerba Santa
- Herbs are hairy
- 111 species
- 5 rare
- 13 on serpentine
- *Phacelia* 24 species (used to be placed in a different family – Hydrophyllaceae which is now a sub-family of Borage)
- *Plagiobothrys* 19 species

Boraginaceae

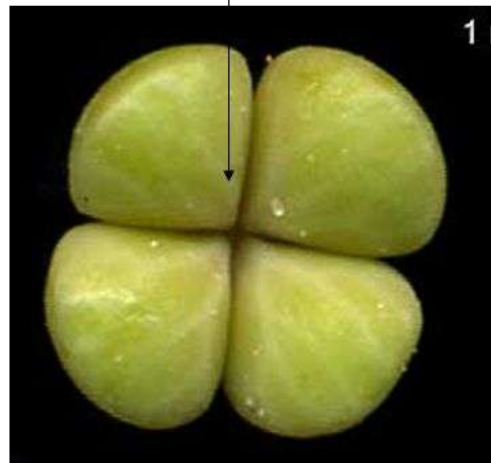
*K(5) C(5) A5 G(4) nutlets



Boraginaceae

**D) DRY, DEHISCENT FRUIT WITH
DELAYED SEED RELEASE: NUTLETS**

**Borage, Mint and Vervain
Families**



(Splits Between and Through the Carpels)

Plagiobothrys (19 species in ElDoCo)

Small white-flowered meadow annuals



Phacelia (24 species in ElDoCo)

Scorpioid cyme inflorescence



Amsinckia

“Fiddleneck”
(helicoid) cyme
inflorescence

4 native to El
Dorado County

Ag weed



Phlox Family in El Dorado County

- ◉ Polemoniaceae (Phlox)
- ◉ Mostly herbs
- ◉ 71 species
- ◉ 4 rare
- ◉ 9 on serpentine
- ◉ California is a hotspot for this family -17 genera and over 170 species occur.
- ◉ *Navarretia* - 24 species in the county

Phlox Family

*K(5) C(5) A5 G(3)

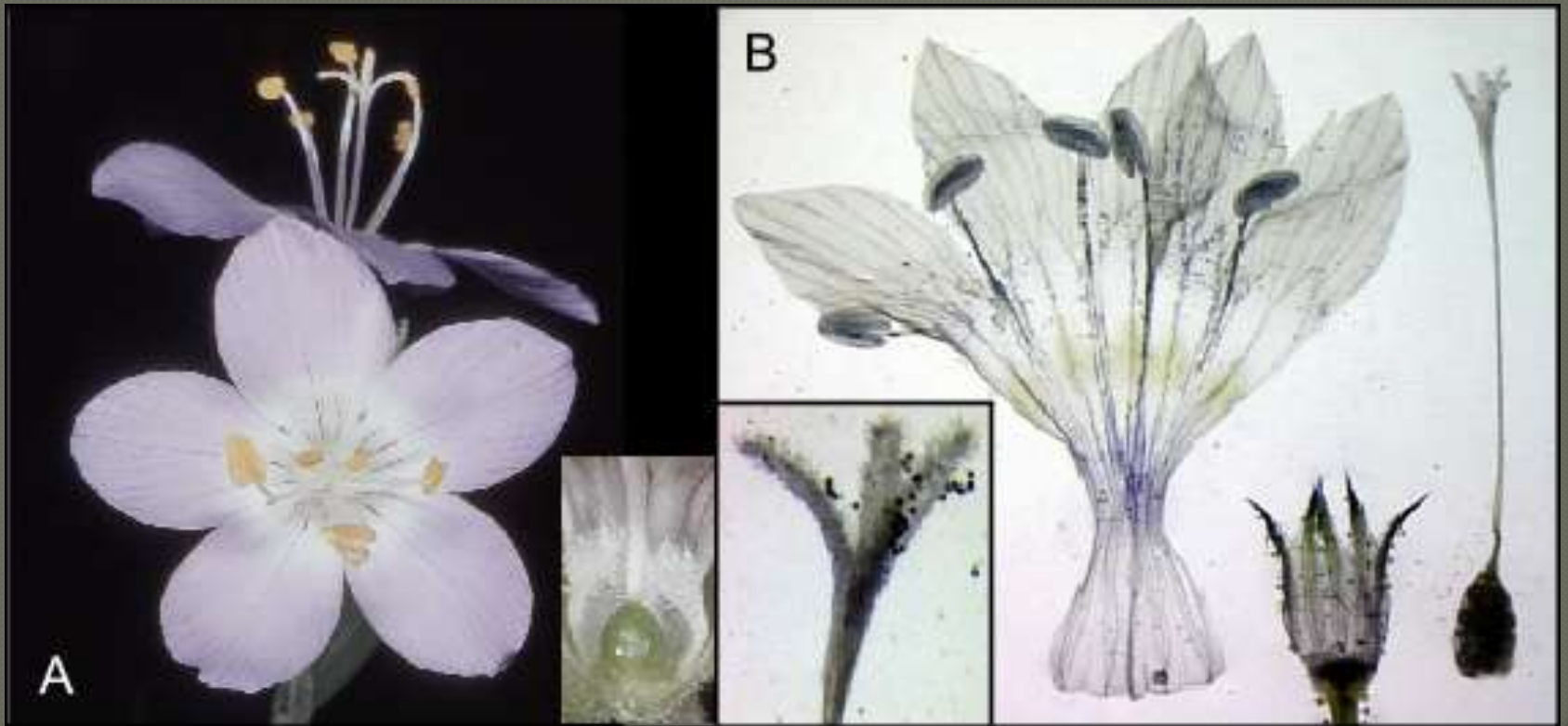
Differences from Borages:

Fruit is a capsule (NOT nutlets)

Inflorescence is not coiled

Phlox Family

*K(5) C(5) A5 G(3)



Navarretia

N. prolifera ssp. *prolifera* Photos by Steve Perry



Other Phlox genera in the county

Gilia capitata



Leptodactylon pungens



Ipomopsis aggregata

Browser address bar: <https://www.eldoradocnps.org>

Page Header:

- Most Visited
- Getting Started
- CRI Genetics Report

Navigation:

- Join CNPS
- Donate
- Shop
- cnps.org

El Dorado Chapter
CALIFORNIA NATIVE PLANT SOCIETY

Menu:

- Home
- About Us
- News & Events
- Gardening
- Conservation
- Plants
- Plant Places
- Education & Outreach
- Resources

Main Content Area:

- Image: A landscape view of a forested area with a stream.
- Dropdown menu (highlighted):
 - Rare Plants
 - Botany
 - Ecology
- Calendar of events
- Want to get involved? Check out our Volunteer and Outreach opportunities
- Visit us on Facebook
- Sign up for email alerts
- Search our website

Text:

Welcome to the El Dorado Chapter of the California Native Plant Society. Our chapter lies in El Dorado County on the west slope of the Sierra Nevada, stretching from the foothills at the edge of the Sacramento Valley to the mountains at Echo Summit. Our chapter works to protect and teach about all native plants in the county, from rare to common. Learn about our chapter [history](#).

<https://www.eldoradocnps.org/plants/botany> 7:00 pm [general meeting]

Navigation:

- Home
- About Us
- News & Events
- Gardening
- Conservation
- Plants
- Plant Places
- Education & Outreach
- Resources

Image: A field of yellow wildflowers and purple flowers in the foreground, with a fence and trees in the background.

Botany

What follows below is a list of documents presented as part of our chapter's meetings. Each document addresses a different botanical family with species found in El Dorado County.

- [Asteraceae \(Aster Family\)](#)
- [Conifers](#)
- [Ericaceae \(Heath Family\)](#)
- [Fabaceae \(Pea Family\)](#)
- [Nitrogen-Fixing Families in Eldorado County](#)
- [Poa \(Grass Family\)](#)

Right Side Navigation:

- Home
- Search
- Plants m
- Rare
- Botan
- Ecology
- Related t
- Habit
- Invas
- Plant
- Plant
- Statewid